

Produced by

Psion Digital
Limited

Psion Technical Support

Contacts: www.pSION.com/international
Knowledgebase: www.pSION.com/support

Connecting the Psion Series 5, 5mx, 7 and Revo with Motorola Infrared mobile phones

Note: All occurrences of **Revo** in this document also refer to **Revo Plus** unless otherwise specified.

This document is a step-by-step guide to connecting your Psion Series 5, 5mx, 7 or Revo to your Motorola phone for email, SMS (not Series 5) or web browsing. Note that the Motorola Timeport L7089 does not support faxing.

Furthermore this document assumes that if you are using a Series 5, you have Message Suite v1.5x installed. The latest version is v1.52 and it is strongly recommended that this version be installed.

You can obtain the latest version of Message Suite from the Psion web site (www.pSION.com) or install it from the PsiWin 2.2 (or higher) CD.

Note: Series 5mx users should ensure that the **Mobile Connectivity update v1.10** has been installed to the Psion before proceeding. This is available from the Downloads area of the Psion web site (www.pSION.com/downloads/).

Which phones can be used?

At the time of writing, phones that are known to work are:

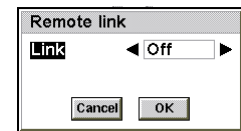
- Timeport L7089
- Timeport P7389

Setting up the mobile phone

1. Check that your Subscriber Identity Module (SIM) card is enabled for data and fax. If you are not sure about this, contact your network provider, who will be able to enable your SIM, if necessary.
2. If necessary, activate the Infrared port on the mobile phone. See your phone's documentation for details on this.
3. Position the phone and your Psion so that the Infrared ports line up at a distance of between 5 to 15cm
4. For best results, your phone needs to be displaying good signal strength. This will be dependent on your cellular provider having good coverage in your area. Failure to have good signal strength may lead to intermittent dropped calls. A wireless connection is liable to open air effects, which means that any call over GSM will not be as reliable or as fast as a land line to cable modem setup.
5. Many problems with the L7089 can be fixed by switching the keypad tones to normal. To do this, press the **Menu** button on the phone then use the up and down arrows to navigate to **Phone Setup** and press the **OK** button. Then use the up and down arrows to navigate to Select Keypad Tones and press the **OK** button. Use the up and down arrows to select **Normal Tones** and press the **OK** button.

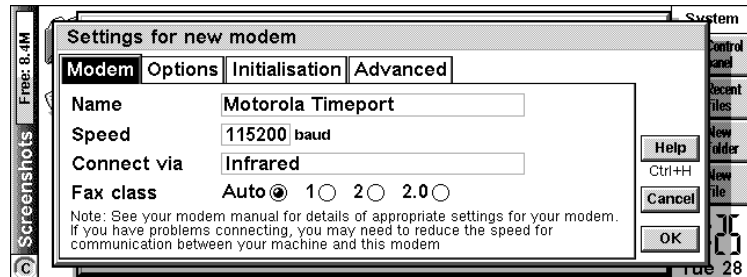
Setting up the Psion

1. Check that the Remote link is switched off on the Psion. On the System screen and press **Ctrl + L** or select **Remote Link** from the Tools menu, set the **Link** line to **Off** and press **Enter** or tap the **OK** button.

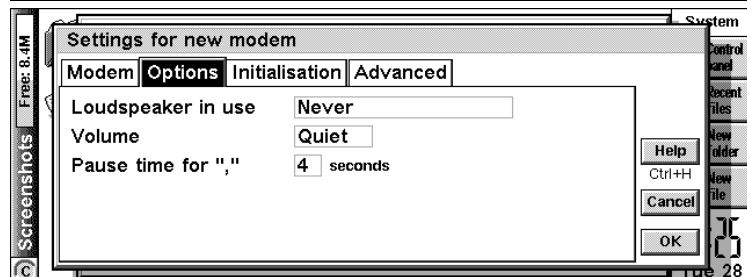


2. Press **Ctrl + S** or tap the **Control Panel** button and double-tap the **Modems** icon. Then tap the **New** button.

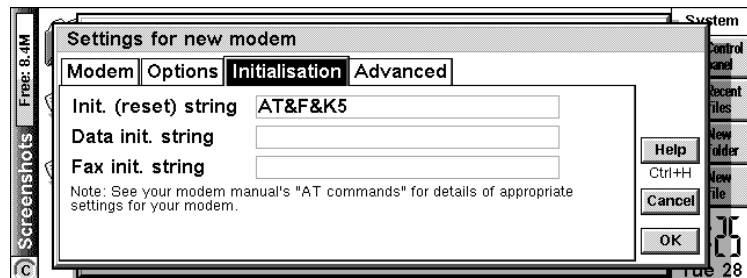
3. On the **Modem** page, tap the **Name** line and type in a name for the modem. Set the **Speed** line to **115200** baud, the **Connect via** line to **Infrared** and the **Fax class** line to **Auto**.



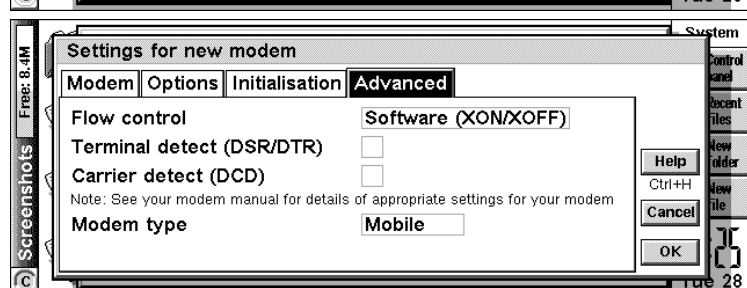
4. On the **Options** page, set the **Loudspeaker in use** line to **Never**, the **Volume** line to **Quiet** and the **Pause time for “,”** line to **4** seconds.



5. On the **Initialisation** page, set the **Init. (reset) string** line to **AT&F&K5** and leave the other two lines blank.



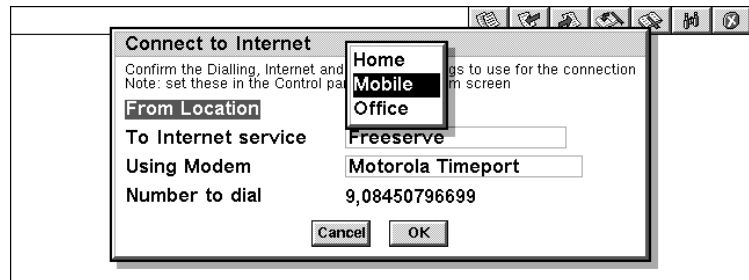
6. On the **Advanced** page, set the **Flow control** line to **Software (XON/XOFF)** and ensure that the **Terminal detect (DSR/DTR)** and **Carrier detect (DCD)** lines are unticked, set the **Modem type** line to **Mobile** (not Series 5) then tap the **OK** button. Tap the **OK** button to return to the Control panel.



7. Double-tap the **Dialling** icon and on the **Location details (5)** or **Location (5mx/7/Revo)** page, set the **Current location** line to **Mobile**. Then tap the **OK** button.
8. Follow the **Setting up Message Suite** or **Setting up Web, Email, Fax and SMS** support document to setup your Internet Service Provider (ISP) and email account details.

Testing your Internet connection with Web

1. Start up the web browser by tapping on the **Web** icon on the **Extras** bar. On the Series 7 you can tap the **Web** icon on the right-hand icon bar.
2. Type in a web site address and press **Enter** or double-tap on one of the links on the home page.
3. In the **Connect to Internet** dialog make sure that the **Location** line is set to **Mobile**, the **Internet service** line is set to your ISP and the **Modem** line is set to the name of the modem you have setup then tap the **OK** button or press **Enter**.



Typical Network login time is 20-30 seconds and typical download time for Psion's home web page (www.pSION.com) is about 2 minutes, this being dependent on having good cellular coverage and high signal level. Lowering the baud rate in the modem setup can sometimes solve other connection problems.

Note: If you see an **Access Denied** dialog, this is most likely because you have not switched the Remote Link off, or because the Comms application is running. To remedy the solution, check that the Remote Link is off as shown above, then press **Shift + Ctrl + E** to exit all open applications.

Notes regarding other Infrared services

1. You cannot send or receive SMS messages on the Series 5 via Message Suite.
2. You cannot send calendar/contact information over Infrared to the Series 5 via Message Suite.
3. There is a third party software solution that allows you to have Phone Book management capabilities over infrared found at <http://www.steveg.dircon.co.uk/>.
4. You cannot use Faxback services that require you to switch between a voice call and fax call without redialling.
5. It is possible for the L7089 to get into a situation where you can send SMS messages using your Series 5mx, 7 or Revo, but not bring messages, that the handset has already received, onto it. If this occurs it can be easily resolved by turning the handset off and then on again.